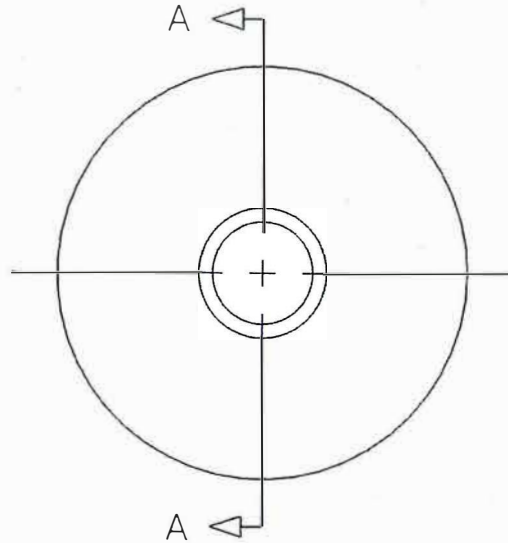
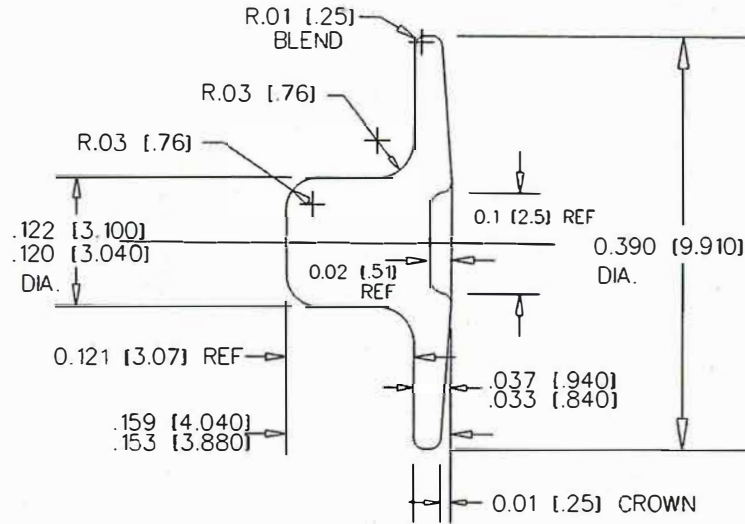


THE INFORMATION CONTAINED IN THIS DRAWING IS THE SOLE PROPERTY OF ROME FASTENER CORPORATION ANY REPRODUCTION IN PART OR WHOLE WITHOUT THE WRITTEN PERMISSION OF ROME FASTENER CORPORATION IS PROHIBITED.



NOTE:
ALL DIAMETERS MUST BE CONCENTRIC
TO WITHIN .005" [0.13]

SECTION A-A



NOTES PLAIN PLASTIC POST - NON CONDUCTIVE



UNLESS OTHERWISE SPECIFIED
DIMENSIONS ARE IN INCHES
TOLERANCES ARE:
FRACTIONS DECIMALS ANGLES
+/- 1/32 .XX+/- .03 +/- 2
.XXX+/- .005

CAD GENERATED DRAWING.
DO NOT MANUALLY UPDATE

APPROVALS DATE

DRAWN crl

CHECKED

RESP ENG

MFG ENG

QUAL ENG

14P EYELET-901-NC

NEXT ASSY	USED ON
APPLICATION	DO NOT SCALE DRAWING

SIZE A	DWG. NO.	REV.
SCALE	CAD FILE:	SHEET OF